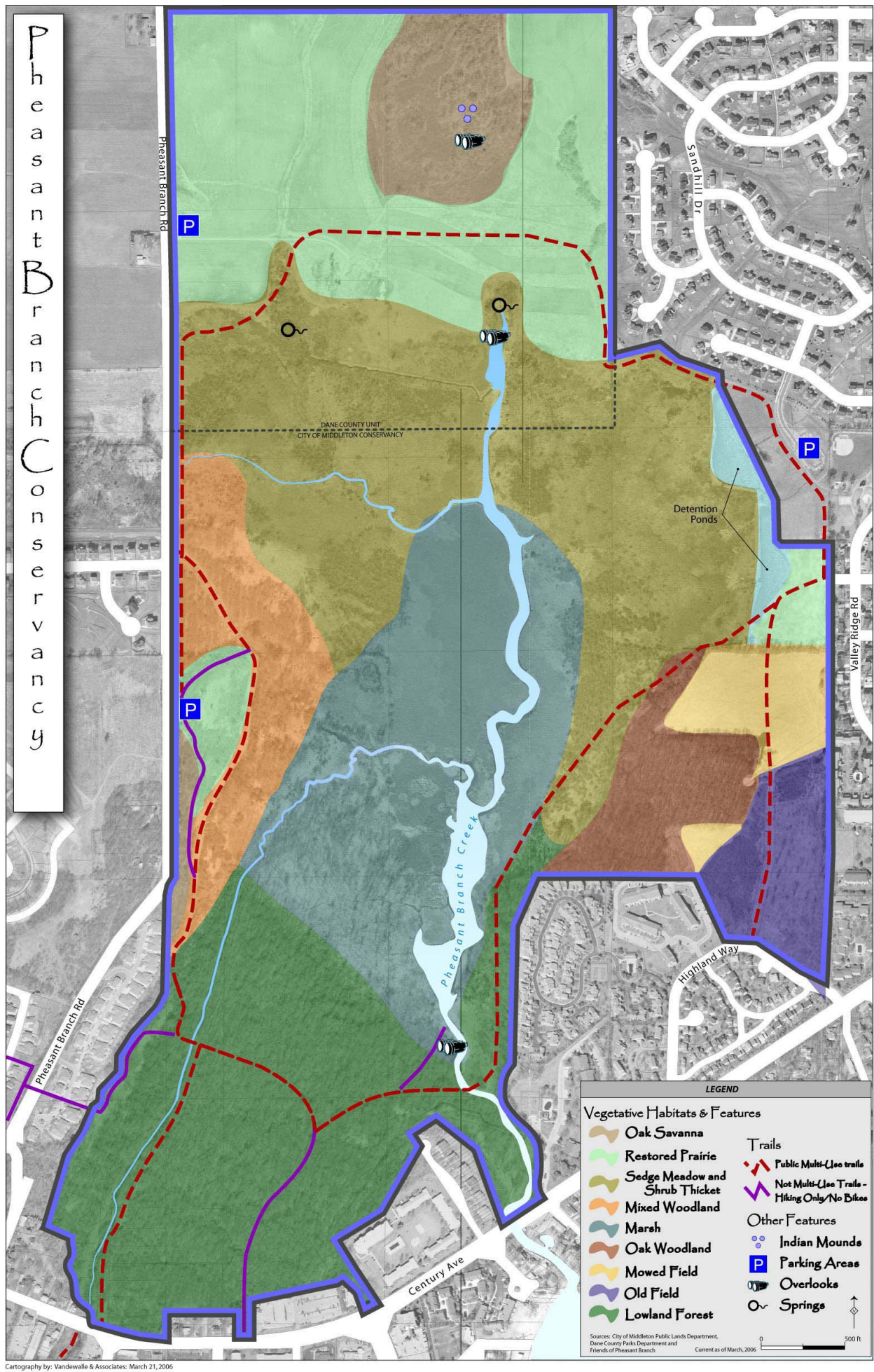


Pheasant Branch Conservancy



DANE COUNTY UNIT
CITY OF MIDDLETON CONSERVANCY

Detention Ponds

LEGEND

- | | |
|---|---|
| Vegetative Habitats & Features | |
| | Oak Savanna |
| | Restored Prairie |
| | Sedge Meadow and Shrub Thicket |
| | Mixed Woodland |
| | Marsh |
| | Oak Woodland |
| | Mowed Field |
| | Old Field |
| | Lowland Forest |
| Trails | |
| | Public Multi-Use trails |
| | Not Multi-Use Trails - Hiking Only/No Bikes |
| Other Features | |
| | Indian Mounds |
| | Parking Areas |
| | Overlooks |
| | Springs |

Sources: City of Middleton Public Lands Department, Dane County Parks Department and Friends of Pheasant Branch. Current as of March, 2006.

