



Vista Views Exploration Guide

While sitting on the bench at the Pheasant Branch Rd Lookout, you can see Fredericks' Hill in the distance. It is surrounded by its oak savannah and the restored prairie.

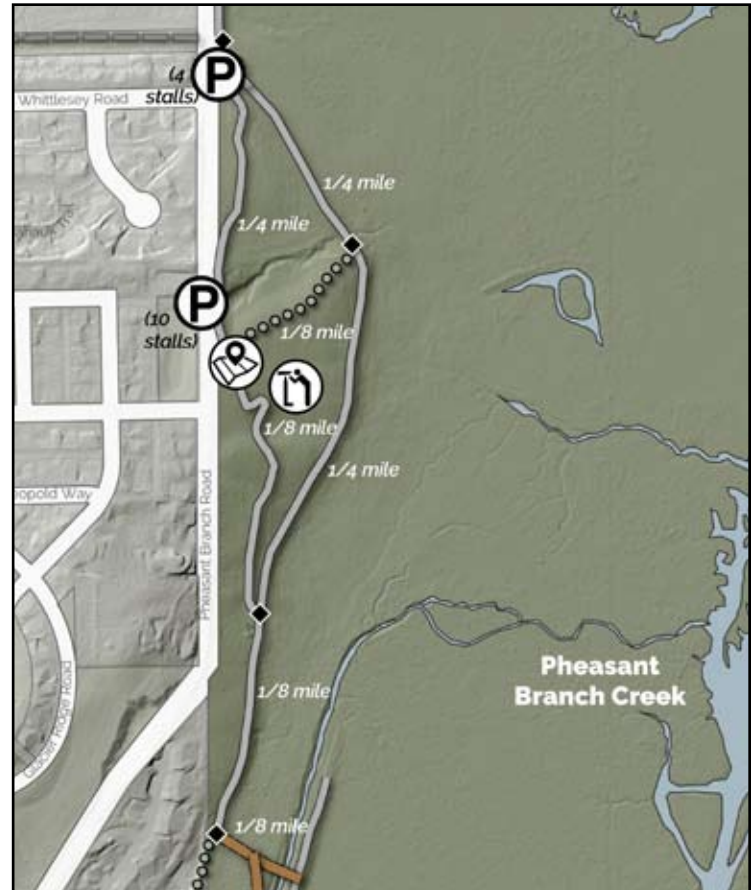
To the immediate right is the marsh. It is usually under water. Herbaceous plants grow in the fairly shallow waters. The water is actually flowing through the marsh. It is very slow moving. It looks like it is not moving at all.

The marsh is a haven for water birds. Cranes gather here every year during their southern migration. Animals you may find here are muskrat, mink and weasels. Marshes like these are vital to keeping our lake water clean. They allow sediment to settle before it reaches Lake Mendota and it filters out many pollutants.

The view north toward Frederick's Hill is one of the most famous in the Conservancy. Many visitors find this site to be a special place to relax, reflect and renew. It appeals to all of your human senses.

Take a moment to truly listen to nature; to smell the air; to view the entire vista.

If time and if there are puffy white clouds in the sky is to look for shapes in the clouds.



Second Vista View - Merchant Lookout

Sharifa Merchant has long been a friend and supporter of the Friends of Pheasant Branch Conservancy. She has lived in Middleton since 1984 and has a special attachment to the Conservancy. You may not have met Sharifa, but you probably have visited the boardwalk and viewing deck with benches in the Conservancy that Sharifa's family financed in memory of her husband, Saban. One can access this special place along the boardwalk trail from Century Avenue or Marina Drive

The Wonder Walk project was the original idea of the Friends of Pheasant Branch Conservancy Senior Advisory Council. Wonder Walk mini-lessons can be downloaded from the Friends website (pheasantbranch.org) and will be in backpacks for check-out at various community locations.